

THE Southwestern

A full-page background image showing a person in a high-visibility green safety suit and a white hard hat. They are walking on a wet, reflective surface, possibly a road or a large pool of water, at night. The person is holding a thin wire or cable in their hands. The background is dark with some trees visible in the distance.

A SOUTHWESTERN ELECTRIC COOPERATIVE MEMBER MAGAZINE

JUNE 2025 • VOLUME 77 • ISSUE 6

Weathering the Wind

**TORNADO SAFETY TIPS
FROM SUPERCCELL
EXPERT**

**POWERING YOUR
PAYMENT OPTIONS**

**CANDIDACY BY PETITION
DEADLINE JUNE 23**

**CO-OP COMMUNITY
BLOOD DRIVE**

**RECYCLE WITH
SOUTHWESTERN**

**DIRECTOR BILL JENNINGS
RECOGNIZED BY NRECA**

INSIDE THIS ISSUE

04 News & Notes

Find the image of the sailboat in this month's issue and we might float you a \$25 bill credit for your hard work.

06 Payment Options

No matter your preference, we've got a bill payment option to suit your needs.

08 Pay As You Go

Our Pay As You Go electric service is changing. Find out how – and why – here.

09 E-cycling Drives

Got an outdated television, computer or phone lying around? We're hosting three e-cycling drives again this year to help give your old electronics new life.

10 Director Certified

Southwestern Electric Director Bill Jennings was recently recognized by the NRECA for working to maintain his Director Gold Credential.

11 SmartHub

Haven't yet signed up for our new account management portal SmartHub? There's no better time than now.

12 Energy & Efficiency

Most manufactured homes don't have traditional HVAC systems, but that doesn't mean you have to freeze in the winter cold or sweat in the summer heat.

14 Health & Safety

Tornadoes are as unpredictable as they are deadly, but these helpful tips from former NOAA lead forecaster and supercell expert Roger Edwards can help keep you prepared – and safe.

18 Out & About

Take the bait and tackle our fishing-focused puzzle in this month's Out & About feature.

20 Who-What-Where

You proved your horse sense in identifying our May antiques, but can you shine a light on the location of the monument featured in this month's puzzle?

22 Co-op Kitchen

We're fired up – and so is our grill – for this month's recipes.

24 Current Events

Farmers markets make their long-awaited return to this month's calendar of events.



525 U.S. Route 40, Greenville, IL 62246.
Phone: (800) 637-8667. Office Hours:
Monday-Friday, 8:00 a.m. - 4:30 p.m.
Visit us on the Web at www.sweci.com.

Board of Directors

Jerry Gaffner, President Greenville
Jared Stine, Vice President..... St. Elmo
Annette Hartlieb, Secretary Vandalia
Sandy Grapperhaus, Treasurer Collinsville
William "Bill" Jennings Alhambra
Brad Lurkins Greenville
Ann Schwarm Loogootee
Marvin Warner Pocahontas
Ted Willman Greenville

CEO

Bobby Williams Chief Executive Officer

The Southwestern

Joe Richardson Editor
email: joe.richardson@sweci.com
Mike Barns Art Director
email: mike.barns@sweci.com
Nathan Grimm Media Specialist
email: nathan.grimm@sweci.com

Satellite Locations:

St. Jacob Office
10031 Ellis Road, St. Jacob, IL 62281

St. Elmo Distribution Center
2117 East 1850 Avenue, St. Elmo, IL 62458

Southwestern Electric Cooperative reserves the right to re-print member comments and correspondence in its cooperative educational and promotional materials.

The Southwestern (USPS 612-500) is published monthly by Southwestern Electric Cooperative, Inc. Periodical postage paid at Greenville, IL. Subscriptions cost \$11.17 per year. Comments or questions regarding material in this publication may be mailed to Joe Richardson, editor of The Southwestern, c/o Southwestern Electric Cooperative, Inc., 525 US Route 40, Greenville, IL 62246, or e-mailed to joe.richardson@sweci.com.

Postmaster: Send address corrections to The Southwestern, 525 U.S. Route 40, Greenville, IL 62246.

Apple and the Apple logo are trademarks of Apple Inc., registered in the U.S. and other countries. App Store is a service mark of Apple Inc. Android, Google Play and the Google Play logo are trademarks of Google Inc.

Reader Contest

We've hidden an image of a sailboat in your magazine. Your job is to find it. The actual image may be larger or smaller than what you see below. We may change the color or reverse or alter the image we've hidden to make the contest more challenging. If you find the sailboat, email us or send a postcard with your name, address, phone number, and the page number where you found the image. Please email us at thesouthwestern@sweci.com or send your postcard to The Southwestern Magazine, Southwestern Electric Cooperative, 525 US Route 40, Greenville, IL 62246.

Entries must be postmarked or in our thesouthwestern@sweci.com inbox by the first day



of the month following the month of publication. For our June contest, we'll need your entries in our inbox or postmarked by July 1, 2025.

We'll choose one winner in a random drawing. Our winner will receive a \$25 credit on an upcoming electric bill. We'll publish the name of this month's contest winner in the September issue of The Southwestern.

APRIL WINNER

Congratulations to Michael Brant Nohren of Altamont. As the winner of our April Hide & Seek contest drawing, Michael will receive a \$25 credit on an upcoming electric bill. Thank you to everyone who participated in our April contest. This month's image appears at left. You'll find Hide & Seek rules below.

RULES TO PLAY BY

- One entry per membership per month.
- A membership can only win once per calendar year.
- No phone calls, texts, social media posts, walk-in traffic, carrier pigeons, singing telegrams or other clever means of communication that may occur to you.
- Please respond *only* by emailing us at thesouthwestern@sweci.com or by sending a postcard to The Southwestern Magazine, Southwestern Electric Cooperative, 525 US Route 40, Greenville, IL 62246.
- Entries submitted by other methods will be disqualified.
- Entries emailed to other Southwestern Electric email addresses will be disqualified, deleted, then disqualified again, just to be safe.
- Entries mailed to other departments or included with other correspondence will likely never find their way to the editor. If they do, they'll be disqualified. Also, he'll add you to his list of people who can't follow instructions. It's a long (and growing) list and not one you care to be part of.
- June contest entries must be in our inbox or postmarked by July 1.
- We'll never hide the image on the front or back cover or on the page where we list the rules.

ON THE COVER

Southwestern Electric Foreman Polyphase Meterman & Tester Scott Fitzgerald works to untangle wire that had been downed during an April 2 storm.

About 65 percent of tornadoes that strike in Illinois will appear from April through June. See our storm safety story on Page 14.



CO-OP REMINDERS

June 9 Payment processing systems will be unavailable from midnight to 4 a.m., while we perform system maintenance. No payments will be processed during this time. We will resume processing payments at 4:01 a.m.

July 4 Offices closed in observance of Independence Day.



FIND US ON SOCIAL MEDIA

For the latest news and notes, follow us on Facebook and x (formerly Twitter). You'll find us at facebook.com/SWECI and x.com/sweci. Search for Southwestern Electric on YouTube and Instagram. You can listen to our podcast, Wireside Chat, on Apple Music, Spotify, Audible and anywhere podcasts are found.



Co-op Community Participates in April Blood Drive

On the morning of April 2, 17 Southwestern Electric employees, directors and members — including five first-time donors — gave blood during an ImpactLife blood drive held at the cooperative's headquarters in Greenville.

"Hosting a blood drive is a simple but significant way for our co-op to support the community," said Human Resources Administrator Marissa Horn, who coordinated the drive. Horn noted that less than three percent of the national population donates blood. "Blood centers across the country and close to home are in critical need of

blood products every day. Bringing the blood mobile to Greenville offers our employees, directors, and community members a convenient opportunity to donate."

Established in 1974, ImpactLife provides lifesaving blood products to more than 120 hospitals and emergency medical service providers in Illinois, Iowa, Missouri and Wisconsin. Each year, ImpactLife relies on thousands of blood donors and hundreds of community partners to help save lives through blood drives, Horn said. "We were proud to be part of this vital, ongoing effort."



Clockwise, from top: Southwestern Electric Human Resources Administrator Marissa Horn, who coordinated the blood drive, stands outside the ImpactLife mobile blood center; SWECI Director Marvin Warner was among those who donated; member Gary Siebert of Keyesport smiles for the camera; Linda and Douglas Scott of Greenville await their turn to give blood.

JUNE 23 DEADLINE TO FILE FOR CANDIDACY BY PETITION

Southwestern Electric members interested in running for a seat on the co-op's board of directors have a final opportunity to enter the 2025 race. While the deadline for standard nominations (May 22) has passed, the cooperative offers an additional month to file for candidacy by petition.

A valid petition must include the candidate's name, address, age and telephone number, along with the names, addresses and signatures of at least 15 other Southwestern Electric Co-op members. Petitions must be received at the cooperative's Greenville headquarters by Monday, June 23, in order for the candidate's name to appear on the 2025 ballot. For additional guidance on filing for candidacy by petition, please see Section 4(D)3 of the cooperative's bylaws. The bylaws are available at sweci.com.

The 2025 board election, which will take place at Southwestern Electric's 87th Annual Meeting of Members, will fill three seats on the cooperative's board of directors. Each director will be elected to serve a three-year term beginning on Sept. 6, 2025, and expiring on the date of the 2028 Annual Meeting.

Any active member 18 years of age or older and in good financial standing with the co-op is eligible to serve on the board of directors, so long as he or she meets the qualifications set forth in Section 5(B) of the bylaws (available at sweci.com). Questions about board service and the election process should be directed to Chief Financial Officer Nathan Taylor. You can reach him at (800) 637-8667 or by email at Nathan.Taylor@sweci.com.

POWERING YOUR PAYMENT OPTIONS

A Guide to Simple, Stress-Free Bill Payments

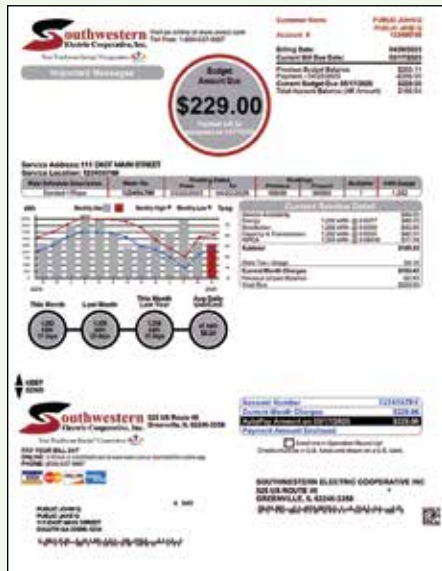
Whether you prefer the convenience of digital payments or the reassurance of traditional methods, we have a bill payment option that fits your needs.

Set It & Forget It: The AutoPay Advantage

We live in a hectic world. Now more than ever, saving time and headspace by automating repetitive tasks makes sense. Enter the AutoPay advantage. AutoPay eliminates the monthly task of remembering to pay your bill.

With AutoPay:

- Your payment is automatically deducted from your bank account on the due date.
- You'll never incur a late fee due to forgetfulness.
- You receive email confirmation when your payment processes (if you select this option in SmartHub).
- There are no additional fees for this service.
- You can set up AutoPay by logging into your account or calling us at 800-637-8667. It's quick and it's free!



SmartHub

For members who want more control over their energy experience, Southwestern Electric's SmartHub billing and outage notification system offers a comprehensive set of tools.

With SmartHub you can:

- View detailed usage history and billing information
- Set up AutoPay or schedule future payments
- Sign up for paperless billing to reduce clutter
- Receive usage alerts and payment reminders (if you select this option in SmartHub)

SmartHub is available as a mobile app at Google Play and the App Store. You can access SmartHub via desktop by visiting <https://sweci.smarthub.coop>.

Quick Pay:

No Account Required

Sometimes you just need to make a payment—now. That's where Quick Pay comes in—our no-registration-required option for fast online payments.

To use Quick Pay:

1. Visit <https://www.sweci.com/paying-your-bill>
2. Click "Quick Pay"
3. Enter your account number and last name or business name
4. Select your payment method and amount
5. Receive an email confirmation

Phone Payments

Our Interactive Voice Response (IVR) system allows you to pay your bill by phone anytime, day or night. The process is simple.

1. Call us at 800-637-8667.
2. Have your account number ready
3. Follow the prompts to enter your payment information
4. Receive a confirmation number

The system accepts Visa, MasterCard, Discover, and American Express.

You can also use a checking account to make a payment via IVR. This method requires you to create a pin number.

Paying In Person

We understand that some members still prefer cash and in-person transactions. Paying your bill in person offers several advantages:

- Immediate confirmation that your payment was received
- If you're paying at our Greenville office, you get to meet one of our awesome member service representatives.
- Option to pay with cash
- No technology required

You can pay in person at our Greenville office at 525 US Route 40, Greenville, IL 62246. Office hours are Monday-Friday, 8 a.m. - 4:30 p.m.

You can also drop off payments after hours using the dropbox at our Greenville office.

We also have a dropbox available at our St. Jacob office, at 10103 Ellis Road, St. Jacob, IL 62281.

For later posting (may take up to three days), you can drop off payments at our St. Elmo warehouse, along Interstate 70, south of the St. Elmo exit.

Mail Call

For decades, sending a check through the mail has been a reliable standby for bill payments. This method remains popular with members who prefer to avoid digital payment methods.

If you prefer to pay by check, you're welcome to mail your payment to us at:

Southwestern Electric Cooperative, Inc.
525 US Route 40
Greenville, IL 62246

When you're mailing your payment, please remember to write your account number on your check and include the payment stub from your bill.

When you're sending a payment through the mail, planning ahead is key. We recommend mailing your payment at least a week before the due date to ensure it arrives and processes in time.

VanillaDirect Pay

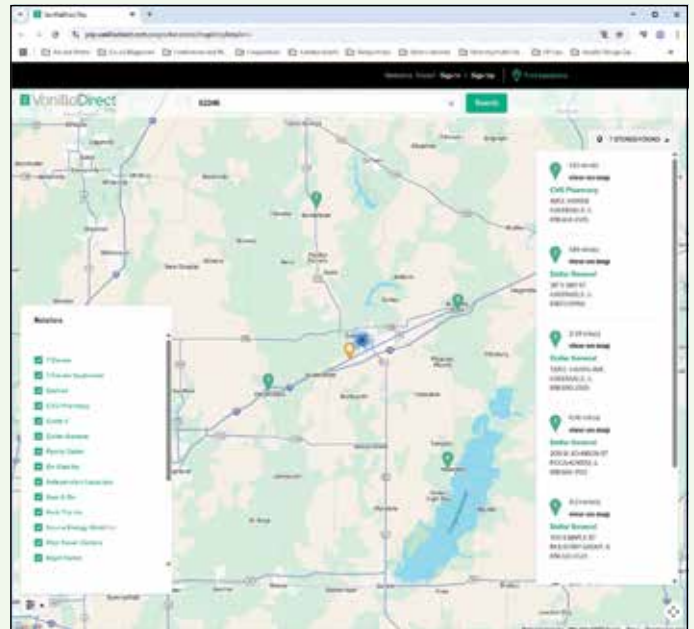
When you have cash but visiting our office isn't convenient

You may have noticed the VanillaDirect Pay logo on the back of your bill. VanillaDirect Pay is a service that allows you to pay your electric bill at participating retail locations. Instead of driving to our office, mailing a check, or making an online payment, you can visit a local store, present your payment information, and pay your electric bill with cash.

You can use VanillaDirect Pay to pay your Southwestern Electric bill at more than 40,000 retail locations nationwide, including CVS, Dollar General, Family Dollar, Speedway, 7-Eleven, and Circle K.

Here's how it works

1. Find the VanillaDirect Pay barcode printed on the back of your electric bill. You can also find the barcode using the SmartHub desktop or mobile app. In SmartHub, tap or click Bill & Pay and then Pay By Cash, and the View Barcode button will appear.
2. Find a retailer near you that offers VanillaDirect Pay. You can search for retailers that offer the VanillaDirect Pay service at <https://pay.vanilladirect.com> or by using SmartHub. A search bar appears below the View Barcode button.
3. Take your barcode to a participating retailer. The cashier will scan your barcode and take your payment. They'll apply a \$1.50 service charge. Your payment will post to your account within four business days.
4. Keep your receipt. Save your receipt until you confirm your payment has been credited to your account. You can check your bill payment status using SmartHub or by calling Southwestern Electric at 800-637-8667. According to their website, the VanillaDirect Pay site stores your receipt information under your billing history.



You can search for retailers that offer VanillaDirect Pay by going to <https://pay.vanilladirect.com> and clicking Find Locations at the top of the screen.

Benefits of VanillaDirect Pay

- Convenient locations. You can pay by VanillaDirect at retail locations throughout our service area.
- Pay without a bank account or payment cards. VanillaDirect offers the convenience of an electronic payment without using a bank account or credit or debit cards.
- Fast processing. Payments typically post to your account within four business days.
- Simple fee structure. Transparent service fees (\$1.50 per transaction) with no additional costs.
- Receipt confirmation. Physical proof of payment for your records.

Is VanillaDirect Pay Right for You?

VanillaDirect Pay is particularly useful if you:

- Prefer or need to pay bills with cash
- Don't have access to banking services
- Want an alternative to online payments or mail

If you have questions about VanillaDirect Pay service, you can reach their customer service number at 844-661-0115 or visit their website at <https://pay.vanilladirect.com>.

Southwestern Electric Cooperative, Inc.
Your True Energy Connection

Greenville Headquarters is open 8 a.m. to 4:30 p.m. Monday - Friday
1-800-637-8667 for all inquiries. Reach us online at www.swes.com
Download SmartHub on the App Store or Google Play.

Explanation of Charges

Town Tax: A tax assessed by a municipality when applicable. All monies collected are paid to the municipality. Also referred to as municipal tax.

Sales Tax: A tax levied by the State of Illinois, when applicable, at the current rate. This tax is remitted to the state in accordance with state laws.

Power Cost Adjustment: This charge reflects the difference between the actual cost of purchased power from the wholesale supplier and the base wholesale cost of power included in the energy charge.

Service Availability: A charge that recovers the fixed costs associated with providing service to the membership regardless of any kilowatt hours sold.

Energy Charge: A charge used to recover the Cooperative's contractual price of purchased power.

Distribution Charge: A charge that recovers the cost associated with the maintenance and operations of the distribution infrastructure.

Capacity & Transmission Charge: A charge that recovers the Cooperative's contractual costs associated with transmitting power from where it was generated to the cooperative's distribution substations.

Billed Demand Charge: A charge that recovers additional costs incurred by the cooperative to maintain a constant supply of electricity and reserve capacity for each account.

Terms of Payment: Each member is responsible for remitting payment for their monthly bill prior to the due date. A 5% penalty will be assessed on the current unpaid balance remaining after the due date.

Operation Round Up: Members may volunteer to round up their monthly electric bills to the next dollar to fund local community projects.

Payment Options:

- Auto Pay:** Free with automatic withdrawal from checking or savings. Enroll at www.swes.com or by phone.
- By Phone:** Free with checking or savings or using credit or debit card. Visit www.swes.com.
- Online:** Free with checking or savings or using credit or debit card. Visit www.swes.com.
- Pay in Person:** Only at 525 US Route 40, Greenville, IL. Checks, cash, or credit/debit cards welcome.
- Mail:** Mail check or money order to: Southwestern Electric Cooperative, 525 US Route 40, Greenville, IL 62245.

Update Your Account Information
Is your account information up-to-date? Fill out the form below to update your contact information.

Name _____
Mailing Address _____
City _____ State _____ Zip _____
Email _____
Phone _____
Cell _____

Vanilla Direct - Pay with Cash at a Store
Now offering cash billpay service at participating retail stores. The barcode below can be scanned at the register, allowing you to make your monthly payment. There is a \$1.50 convenience fee to use this service. To find a location near you, visit pay.vanilladirect.com.

By accepting or using this barcode to make a payment, you agree to the full terms and conditions, available at pay.vanilladirect.com/terms after successful payment using this barcode, you may retrieve your bill delivered e-mail or at pay.vanilladirect.com/billing.

The majority of participating locations will accept cash payments up to a maximum amount of \$500.00.

Participating Retailers: DOLLAR GENERAL, CVS pharmacy, FAMILY DOLLAR, Walgreens, 7-Eleven, Circle K.

The VanillaDirect Pay barcode is located on the back of your electric bill.

Changes Effective July 1

Letter to Members Who Use Our Pay As You Go Electric Service

Dear Member,

We understand that changes to your electric service impact your household budget, which is why we wanted to let you know about an upcoming adjustment to our Pay As You Go program.

Effective July 1, 2025, Southwestern Electric will require a minimum payment of \$20 each time you add money to your Pay As You Go account. Your payment will be applied directly to your usage.

What this means for you:

- Beginning July 1, when you're adding funds to your account (online, via the SmartHub app or at a payment location), the minimum amount you can add will be \$20.
- Your existing account balance won't be affected.

The new minimum payment helps us:

- Address the rising costs of payment processing fees. Southwestern pays processing fees on a per-transaction basis. The \$20 minimum payment was implemented to reduce the frequency of Pay As You Go transactions, lowering processing costs incurred by the cooperative.
- Maintain consistent payment practices. In the past, our minimum payment amounts varied by payment method and location. A uniform \$20 minimum payment will eliminate confusion by setting a standard that applies to all payment methods and locations.

You can make your \$20 minimum payment by:

- Using the SmartHub mobile app or paying online using the SmartHub web portal at <https://sweci.smarthub.coop>.
- Phone payments through our automated system at 800-637-8667.
- Paying in person at our Greenville office.
- Using VanillaDirect at participating retail stores. There's a \$1.50 fee to use this service. Find a location near you by visiting pay.vanilladirect.com/pages/retailers.

Questions & Answers

Q: Why is a minimum payment being implemented now?

A: We're continually taking steps to reduce costs and improve operational efficiency. We held off on requiring a minimum payment as long as possible, but rising payment processing fees made the adjustment necessary. A \$20 minimum payment was chosen to reduce operational costs while avoiding the more significant burden a higher minimum payment would have placed on our members.

Q: Will this affect my current account balance?

A: No. Your balance won't be affected.

Q: Can I still monitor my usage in real-time?

A: Absolutely. Your usage monitoring options remain unchanged. You have the same visibility and control over your energy use you've always had.

If you have questions or concerns about the new \$20 minimum payment, please call us at 800-637-8667. A member of our management team will be happy to speak with you!



Recycle with Southwestern

WE'RE A NATION IN LOVE WITH ELECTRONICS

According to a Connected Consumer Survey conducted in 2023:

- You probably have 21 connected electronic devices in your home.
- Half the people reading this article brought a new connected device into their home last year.
- About one out of every six of you added three or more connected electronics to your home.

Given the statistics, it's likely you own an outdated TV, PC or mobile phone. We can help you find new life for your old devices through e-cycling — electronics recycling. E-cycling is the process of refurbishing, redistributing and reusing electronic devices and components, rather than discarding them. It extends the lifecycle of electronics and lowers their overall environmental impact.

Southwestern Electric will host three e-cycling drives this year. You're invited to bring your obsolete electronics to our collection sites on the dates listed at right. Your electronics will be collected and recycled by an EPA-approved recycling center. All collections begin at 9 a.m. and end at noon or when the truck is filled — whichever comes first.

We can help you recycle a variety of electronics, including:

- Computers, printers, cables and peripherals (keyboards, mice, etc.)
- Fax machines, scanners, digital converter boxes, cable receivers, satellite receivers.
- Video game consoles, digital video disc player/recorders, portable digital music players.
- Networking equipment, server, telecommunications, phones, cell phones and clocks.
- VCRs, stereos, and audio/video equipment (including cable/satellite).
- Electrical, cabling, communication machinery, and equipment.
- Home electronics, lamps, blenders, toasters, irons, etc.

Please Note

- Rechargeable batteries (NIMH, Li-ion and NICKD) will be accepted for a fee of 50 cents per pound.
- CRT TVs, console TVs, projection TVs and monitors will be accepted for a fee ranging from \$5 - \$35 depending on their size and model. Please bring cash or check for payment.
- Light bulbs, DVDs, CDs and VHS and cassette tapes and hazardous materials will not be accepted.



RECYCLING DRIVE DATES & LOCATIONS

- **June 28** Southwestern Electric Cooperative's headquarters, 525 US Route 40, Greenville, IL 62246
- **September 27** Southwestern Electric's St. Elmo Distribution Center, 2117 East 1850 Avenue (frontage road southwest of the St. Elmo exit off Interstate 70), St. Elmo, IL 62458
- **October 25** Southwestern Electric's St. Jacob Office, 10031 Ellis Road, St. Jacob, IL 62281
- **Collection Times** All collections will begin at 9 a.m. and end at noon or when the truck is filled — whichever comes first.

QUESTIONS & CJD E-CYCLING

Have questions regarding e-cycling or recyclable items and fees? Call CJD E-Cycling at (618) 659-9006 or email them at info@cjdeycling.com. CJD E-Cycling is a family-owned recycling business with offices in East Alton and Edwardsville. You can learn more about CJD E-Cycling and the materials they recycle at www.cjdeycling.com.



Jennings Maintains NRECA Director Gold Certification

Southwestern Electric Director Bill Jennings was recently recognized by the National Rural Electric Cooperative Association (NRECA) for maintaining the association's Director Gold Credential. Jennings earned Director Gold Certification in 2020 and has since contributed to the development of new NRECA courses.

To qualify for Gold Certification, directors must complete coursework necessary to be designated a Credentialed Cooperative Director (CCD) and earn a Board Leadership Program Certificate.

The CCD program consists of courses that focus on cooperative governance. The program prepares directors to fulfill their fiduciary duty as elected officials serving on behalf of the membership.

NRECA's Board Leadership Program consists of a series of courses focusing in greater depth on specific industry and governance issues, including risk management, power supply, parliamentary procedure, technology and policy development.

Since being elected to Southwestern Electric's board of directors in 2018, Jennings has applied his training and experience to fulfill the key roles of a director, which he identifies as advocate, regulator and fiduciary. "Over the last



PHOTO COURTESY BROOKE SCOTT

Southwestern CEO Bobby Williams (left) congratulates Director Bill Jennings, who was recently recognized by the national rural electric cooperative trade association for maintaining his Director Gold Credential.

six years, I've built a deep understanding of how interwoven these roles are, in terms of representing our co-op members' interests, and overseeing our policies, the performance of our CEO, our co-op's financial health, and our compliance with regulations that govern operations," he said.

Bill Jennings serves on Southwestern Electric's Policy & Bylaws Committee and Cyber Security Committee. He's been a Southwestern Electric member since 1993 and lives on a farm near Alhambra with his wife, Patty. They have two married children, Anna and Thomas.

YOUR SPARE CHANGE CAN MAKE A BIG DIFFERENCE THROUGH OPERATION ROUND UP

Neighbors helping neighbors. That's what a co-op is about. And that's the idea behind Operation Round Up (ORU), a charitable program governed, funded and supported by Southwestern Electric Cooperative members like you.

Here's how it works: After you sign up for ORU, Southwestern will round up the amount due on your monthly electric bills to the nearest dollar. Your donations are placed in the ORU account. Each quarter, an independent committee of Southwestern Electric members reviews ORU grant requests. ORU grants support various community projects across the co-op's service territory.

Since launching the program in 2005, **Southwestern Electric's Operation Round Up has assisted a wide variety of organizations**, including local food pantries, senior centers and fire departments.

Ready to get started? To join ORU today, just check the enrollment box on your electric bill or online, or contact Southwestern Electric Cooperative at (800) 637-8667. For more information about Operation Round Up, visit sweci.com.



Small change.
Big difference.

Sign Up For SmartHub Today!

In March, Southwestern Electric launched SmartHub, its new account management portal and easy-to-use app. SmartHub offers tools and information you can use to save time and money.

You can use SmartHub for:

Billing & Payments. With SmartHub, you don't have to wait for your bill to arrive in the mail. You can access your bill anytime, anywhere, and save time with easy payment options that help you avoid late fees and service interruptions.

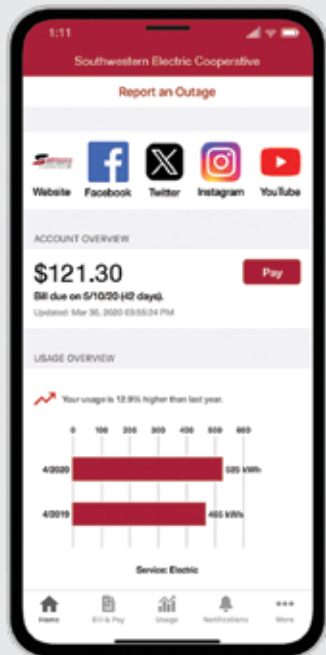
Alerts & Notifications. You can stay up to date on important account events via email or text messages, and receive the information you need to make informed decisions about your account.

Paperless Billing. Save trees and time when you activate SmartHub paperless billing, an eco-friendly way to instantly access your bill.

Usage Monitoring. Worrying about usage or surprising bill amounts can be stressful. When you know what devices are using the most energy, you can make money-saving decisions about your account.

Outage Reporting. Need to report a power outage? SmartHub is the fastest and easiest way to let us know when your power goes out. When widespread storms knock out power to an entire region, phone lines can become overloaded. With SmartHub, you can avoid busy signals and report outages with a few simple taps on your mobile device.

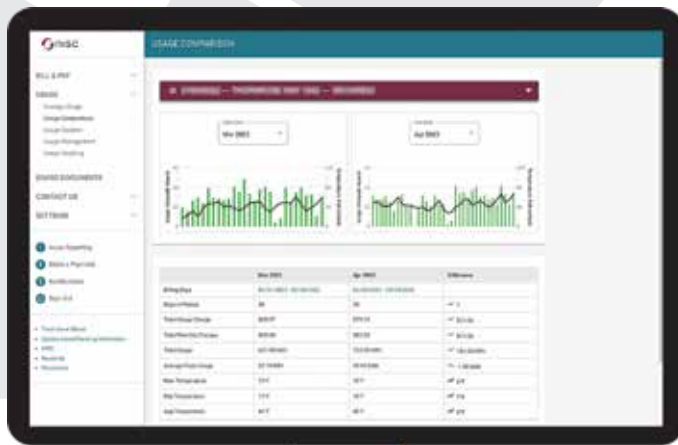
Learn more by watching or reading our tutorials at sweci.com/smarthub or by downloading and exploring the SmartHub app from Google Play or the App Store.



ACCOUNT DASHBOARD

From the SmartHub account dashboard you'll see:

- Quick links that will lead to the features of SmartHub
- Usage Overview graphs to help you analyze and understand your energy usage trends
- The latest communications and alerts from us
- A Pay button to make quick payments right from the home screen



USAGE COMPARISON

This tool lets you compare two monthly bills side-by-side to see “this year versus last year” or “this month versus last month.”

The comparison tool illustrates how weather and temperature affect your energy bills.

The comparison tool can also help you determine how changes in your lifestyle and energy usage habits or the addition of new appliances impact your bill, and may suggest energy-saving measures that will offer the best return on your investment.

AUTO PAY PROGRAM

Enroll in Auto Pay and enjoy the convenience of having your bill automatically paid each month from your bank account or credit card.

You no longer have to worry about due dates or late fees since payments are automatically deducted from your account each month.

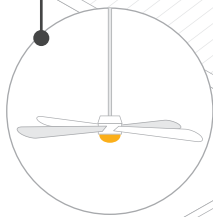
Learn more about SmartHub at sweci.com/smarthub and on our social media channels.

HEATING AND COOLING TIPS FOR MANUFACTURED HOMES

If you own a manufactured home, take measures to ensure you have an efficient heating and cooling system. You can also make simple improvements that save energy and make your home more comfortable.

\$ Install ceiling fans

Install ceiling fans throughout your manufactured home. Ceiling fans are energy efficient and can be used to keep warm or cool air moving throughout your home. Be sure to turn them off when you're away. Remember, ceiling fans cool people, not rooms.

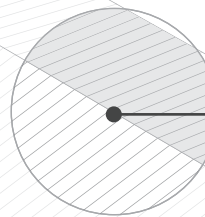


\$ Option for smaller budgets

\$\$ Option for flexible budgets

\$\$ Efficient roof color

Choose a light-colored roof if you live in the southern part of the U.S. and a dark-colored roof if you live in the northern U.S.



\$\$ Install a mini-split system

Eliminate unnecessary heating and cooling by installing a single zone strategy throughout your manufactured home. A zone system allows you to save energy by only heating or cooling rooms that are occupied.

ZONE 2

ZONE 1

\$ Install awnings

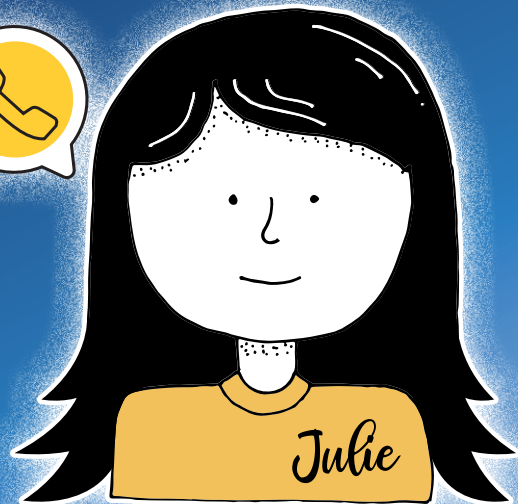
Install awnings over windows to keep sunlight from overheating your home during the summer.

\$\$ Add insulation

If you have a home that was manufactured before 1976, you could add insulation to your home's underbelly to reduce any heat loss.

Source: U.S. Dept. of Energy

Steps to Solar Commissioning



1

Contact Julie Lowe, energy manager, at (800) 637-8667 or julie.lowe@sweci.com for our information and commissioning packet.

2

Contact your installer and insurance agent. Ask your installer for a one-line diagram. Request a certificate of insurance from your agent. They're welcome to send those documents to Julie Lowe at Southwestern Electric. Or if you'd like to review them, they can send them to you, and you can pass them along to Julie.

3

After your one-line diagram is approved by Southwestern Electric, you'll receive a \$500 invoice to cover the installation of your new dual register electric meter, a system inspection, and your array's interconnection to the grid. If your installer will be paying this invoice on your behalf, we'll send the invoice directly to them.

4

After installation is complete, contact us to schedule your system's on-site review and commissioning.

5

Our commissioning team will visit your site. We will inspect your system to verify it meets our safety specifications. A team member will review a memorandum of understanding with you. You'll sign this document for our files. Note: If you won't be present for commissioning, please schedule a meeting to review and sign the memorandum beforehand. After your system passes inspection, you go live! Your array is connected to Southwestern's distribution system.

6

We'll send you and your installer a certificate of completion. Your installer will submit this document for you, so you can receive your solar renewable energy credits (SRECs).

7

Each year, you'll submit documentation to confirm you've renewed your insurance. You may add us as a certificate holder on your policy so the renewal will be sent to us automatically each year.

8

Every three years, we'll visit your system to confirm it's connected properly, well-maintained, and that your safety signs are in place.

WEATHERING THE WIND

Story by Joe Richardson
Photos by Mike Barns

Southwestern Electric crews work to restore an outage after a strong storm system moved through the region on April 2, 2025. The storm, which included driving rain, high winds and a confirmed tornado that touched down south of Greenville, left hundreds of Southwestern members without power.

Storms will spawn about 1,200 twisters in the U.S. this year. About 65 percent of the tornadoes that strike in Illinois will appear between the first of April and the end of June, with 50 percent occurring between 3 p.m. and 7 p.m. But twisters have appeared in Illinois during every month, at all times of the night and day.

How do you protect your family from a weather event that's both deadly and unpredictable? Roger Edwards, former lead forecaster for the operations branch of the National Oceanic and Atmospheric Administration's (NOAA) National Weather Service Storm Prediction Center, and current meteorologist, researcher and photographer for Supercell Scientific and Consulting, Norman, Okla., offers these tips.

PLANNING AND PRACTICE

Work with your family to develop a tornado safety plan. Know where you'll take shelter, and practice getting there quickly and safely. Store protective coverings (a mattress, sleeping bags, thick blankets and such) near your shelter space to protect your family from flying debris.

If you shop frequently at certain stores, learn where there are bathrooms, storage rooms or other interior shelter areas away from windows, and the shortest ways to get there.

WHEN THERE'S A TORNADO WATCH

When a tornado watch is issued for your area, stay tuned to local TV, radio, NOAA Weather Radio, or a reliable app for updates and warnings. Keep an eye on the sky and be alert for strong, persistent rotation in a cloud base, whirling dust or debris on the ground, hail or heavy rain followed by calm or a fast, intense wind shift, or a loud, continuous rumble.

At night, pay attention to bright flashes near the ground. These may mean power lines are being snapped by strong winds. If you see signs of a tornado, take shelter immediately.

WHEN THERE'S A TORNADO WARNING

Seek shelter immediately. If your home has a basement, take cover under a heavy table or work bench, or cover yourself with a mattress or sleeping bag. Avoid windows. Know where heavy objects rest on the floor above and stay clear of them; they may drop through the floor if strong winds compromise your home. If you have a helmet handy, put it on — but don't waste precious seconds searching for one.

If you're in a dorm, apartment, or home without a basement, go to the lowest floor and take shelter in a small center room (like a bathroom or closet), under a stairwell, or in an interior hallway. Avoid taking shelter near windows.

Continued on page 16 ►





► *Continued from page 15*

Crouch to the floor, face down, and protect your head with your hands and arms. A bathtub may offer some protection. Cover yourself with thick padding like a mattress or blankets to protect yourself from debris.

If you're in an office building, hospital, nursing home or skyscraper, find an enclosed, windowless area in the center of the building, away from glass, on the lowest floor (interior stairwells are good places to shelter). Crouch and cover your head.

Avoid elevators. You could be trapped if the tornado cuts power to the building.

If you're in a mobile home, leave it. It's not as safe as an underground shelter or permanent, sturdy building. Go to a designated shelter or nearby permanent structure.

If you're caught in the open away from

a sturdy building, lie face down on low ground and cover your head with your arms. A tornado can turn large objects like trees and dumpsters into missiles, so stay clear of them.

AFTER A TORNADO HITS YOUR AREA

Continue listening to local radio or television stations, and your NOAA weather radio, for updated information.

Be aware of potential hazards such as downed electrical lines, ruptured gas lines, and structural damage to your home. Call 911 to report injured or trapped persons. Give first aid where appropriate, but don't move seriously injured persons unless they're in immediate danger. And never enter a building that appears to have structural damage or that poses other hazards.



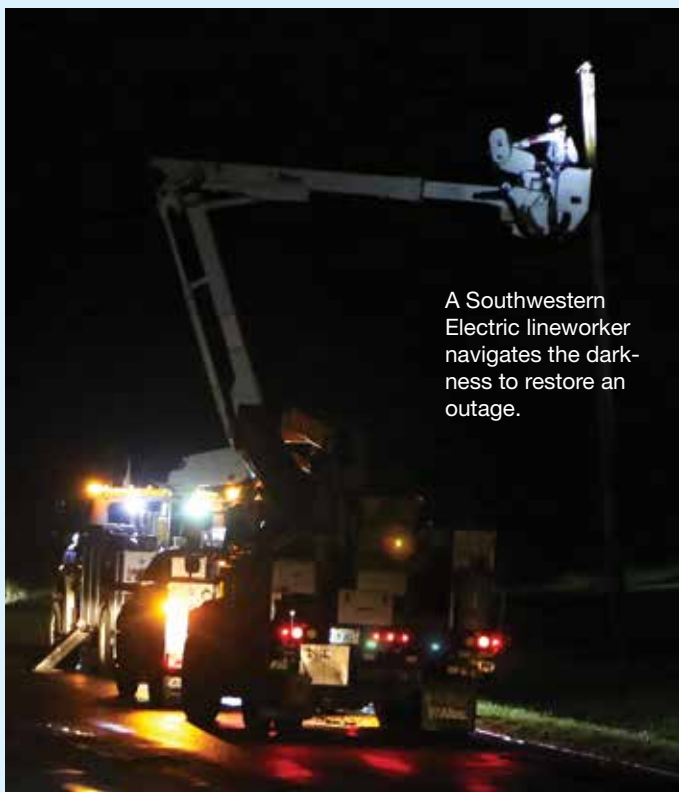
Top, winds from the storm were so powerful that in its wake, debris was left wrapped around poles and lines. Above, Southwestern Electric Journeyman Lineman Braden Clark uses a headlamp as he works in a bucket truck. Pictured, crews worked into the early-morning hours to get every member's lights back on.



Debris, branches and wire were left scattered as a result of the high-intensity winds.



A Southwestern Electric lineworker navigates the darkness to restore an outage.



STEPS TO SAFETY

IF YOUR AREA IS UNDER A TORNADO WATCH

- Listen to a battery-powered NOAA weather radio, your local radio or television stations, or use a reputable app for updated information.
- Be alert to rapidly-changing weather conditions. Watch for signs of a possible tornado and be prepared to take shelter immediately.
- Review your family emergency plan.

IF YOUR AREA IS UNDER A TORNADO WARNING

- Listen to a battery-powered NOAA weather radio, your local radio or television stations, or use a reputable app for updated information.
- If you're at home, go to your predetermined safe zone to protect yourself from glass and other flying objects. If possible seek shelter under a piece of large, sturdy furniture, such as a heavy table or workbench. Stay away from, and do not open, windows. Remain in your shelter or safe zone until the storm has passed.
- If you're not in your home, seek shelter in the basement or an interior room of a sturdy building nearby.

IF YOU'RE IN AN AUTOMOBILE

- If you're in an automobile, there's no ideal option to ensure your safety. You'll have to evaluate the situation and use your judgement to determine the safest course of action.
- If the tornado is visible, far away, and traffic is light, you may be able to drive out of its path by moving at right angles to the tornado. As soon as possible, leave your vehicle and take shelter in a sturdy building or underground.
- If you can safely get below the grade of the road, exit your car and flatten yourself in a ditch or low area, covering your head with your hands and arms.
- If you're caught by extreme winds or flying debris, park your car out of traffic lanes. Stay in the car with the seat belt on. Put your head down below the windows. Cover your head with your hands and a blanket, coat or cushion.
- Don't hide under a bridge. Bridges offer little protection from flying debris and they can fail under the stress of a tornado. Climbing into the undercarriage of a bridge exposes you to higher velocity winds than if you were sheltered in a ditch or low area.

TORNADO WATCH vs WARNING

Tornado watch: The National Weather Service issues a tornado watch when weather conditions in an area indicate an increased risk for severe weather that may be capable of producing a tornado.

Tornado warning: The National Weather Service issues a tornado warning when a tornado has been sighted or indicated by weather radar. On average, tornado warnings are issued 13 minutes prior to the event, but warning times vary greatly and may be much less. ***You should always take immediate action when authorities issue a tornado warning.***



[illegible]

Whether you're a seasoned angler or a first-time fisher, we've got a puzzle for you. Solutions appear on page 27, where you'll also find information about Free Fishing Days.



- 4 Crawfish
- 6 Frogs
- 1 Small curly tail grub
- 1 Big curly tail grub
- 1 Egg sinker

- 3 Bell sinkers
- 2 Bullet sinkers
- 8 Bobbers
- 1 Zebco 202
- 1 Salamander
- 4 Bass Birds

- 9 Marabou jigs
- 2 Pop Rs
- 1 Hula Popper
- 1 Jitterbug
- 1 Rapala original floater

- 2 Rooster tails
- 1 Yellow spinner bait
- 2 Gold willow leaf spinner blades
- 1 Lure for walking the dog while you fish

WHO • WHAT • WHERE




Some months we go searching for puzzle page items and come up wanting. And some months, through the generosity of members, brilliant antiques come to us. That was the case for our May puzzle, when longtime Southwestern Electric member Dale Griffith of New Douglas shared a set of relics he thought would challenge our readers — and challenge they did.

Congratulations to Karen Shaw of Pocahontas and Bill Malec of O’Fallon for correctly identifying some of the items shown, and to Karen Wood of Edwardsville for hitting the trifecta. And thank you to Dale Griffith for sharing his antiques with us. They made a great puzzle!

Speaking of puzzles, can you identify the location of this month’s challenge? We’ll print your responses in our July magazine. We look forward to hearing from you.



Who-What-Where is a contest that challenges your knowledge of people, places and objects in and around Southwestern Electric Cooperative’s service area. Here’s how it works: Each month, we run a photo. Your job is to tell us who’s pictured, what we’ve photographed, or where we shot the photo. You can email your response to joe.richardson@sweci.com or send it by mail to Joe Richardson, Southwestern Electric Cooperative, 525 U.S. Route 40, Greenville, IL 62246. Please include your name, mailing address, and hometown. If you have a story about our photo topic, include that as well—we love these! The puzzle solution—possibly accompanied by a few words from you—will appear in a future issue of *The Southwestern*.



Meanwhile, here's what you had to say about Dale's relics.

The items shown are: A stirrup, a simple twitch, and a wire muzzle (sometimes called a grazing muzzle). The stirrup would be used on a western saddle. The twitch would have been used by twisting the rope around the upper lip of a hard to control horse as a restraining device. It would keep the horse calm and subdued without the use of drugs, usually for veterinary treatment, and should only

be used for a short period of time. The muzzle would have been used mostly to control or limit a horse that had vices such as biting, tearing blankets, cribbing or chewing wood, but would still allow limited eating and drinking.

—Karen Wood, Edwardsville

Regarding the May issue: I believe it's a draft horse stirrup. I use one on my kitchen counter to hold napkins.

—Karen Shaw, Pocahontas

The editor was surely horsing around with the May 2025 "What am I?" trifecta. I'm not a horseman per say but from what I've gleaned from research it looks like what is pictured is a wooden stirrup (begging the question as to where's the other) with a handmade crop lodged behind it and a wire feed basket hanging below.

Now all you need is a horse.

—Bill Malec, O'Fallon

WHERE ARE WE?



CO-OP KITCHEN

HOT OFF THE GRILL

Bacon Wrapped
Filet Mignon
Prepared and
photographed by
Mike Barns
mike.barns@sweci.com

BACON WRAPPED FILET MIGNON

Ingredients

- 4 beef filet mignon 4-8 ounces each depending on your appetite
- 8 slices bacon
- freshly ground salt and pepper
- 2 tablespoons oil

Directions

1. Allow filets to come to room temperature (about 30 minutes).
2. Wrap bacon around each filet and secure with toothpicks.
3. Lightly brush with oil and sprinkle both sides with salt and pepper.
4. Preheat grill to 450°.
5. Grill filets in covered grill for 5-6 minutes on each side.
6. To determine doneness, insert a meat thermometer into the thickest part of the filet. Cook until the temperature is 120°F for rare, 130°F for medium rare, 140°F for medium, 150°F for medium well and 165°F for well done.
7. Let filets rest for 5 minutes covered loosely with aluminum foil, remove toothpicks and serve.

GRILLED BURGERS

Ingredients

- 2 pounds ground meat
- 1 packet dry onion soup mix
- 1 tablespoon Worcestershire sauce
- salt and pepper to taste
- 2 tablespoons oil
- your favorite cheese slices

Directions

1. Combine ground meat, onion soup mix, Worcestershire sauce and salt and pepper.
2. Place mixture in refrigerator for at least an hour to allow the seasoning to penetrate and bind with the meat.
3. Form patties about ½ to ¾ inches thick. To keep patties from swelling in the middle make a small indentation in the center with your thumb.
4. Brush patties with oil to keep them from sticking to grill grates and place on medium heat grill.
5. Grill the burgers until golden brown on the first side, flip over and grill burgers until golden brown on second side.
6. Add cheese slices and close grill lid for about 30 seconds to melt cheese.
7. Remove from grill, let burgers rest for about 5 minutes, place on bun, garnish with your favorite condiments and enjoy.

LEMON FLANK SKEWERS WITH LEMON DIPPING SAUCE

Ingredients

- ⅔ cup olive oil
- 1 tablespoon lemon zest
- ½ cup fresh lemon juice
- 2 teaspoons sea salt
- ½ teaspoon crushed red pepper
- 1 teaspoon garlic minced
- 4 flank steaks (about 2 pounds) cut diagonally into ¼-inch slices
- 50 (12 inch) wooden skewers

Lemon Sauce Ingredients

- 2 (16 ounce) containers sour cream
- 2½ tablespoons horseradish
- 6 tablespoons fresh lemon juice
- 1 teaspoon lemon zest
- 1 teaspoon salt

Lemon Sauce Directions

1. Combine all ingredients and refrigerate until ready to serve.

Directions

1. Combine olive oil, lemon zest, lemon juice, sea salt, red pepper and garlic in shallow dish or heavy duty zipper bag.
2. Add sliced flank steak to marinade, cover or seal and chill 8 hours turning occasionally.
3. Soak wooden skewers in water for 10 - 15 minutes.
4. Remove steak from marinade and discard marinade.
5. Thread each piece of steak onto 1 skewer.
6. Grill skewers over medium high heat (350 - 400°) on covered grill for 4 - 5 minutes on each side or to desired degree of doneness.
7. Serve with lemon dipping sauce.

CURRENT EVENTS

June 5 - July 28 MUSIC IN THE PARK, Grafton. Bring your lawn chairs and coolers for a toe-tapping evening of great music along the Mississippi River. Every Thursday 7 - 9 p.m. Opening act by Grafton's Nickie Brooks starting at 6:30 p.m. Admission is free. The Grove Memorial Park, corner of Market and Main Streets. Visit grafftonilchamber.com.

June 6 BIRTHDAY CELEBRATION, Edwardsville. Come celebrate the 2nd birthday of West End Service Station. This family friendly event will feature a car display, photo ops, old-fashioned soda and cupcakes for the special occasion. 11 a.m. - 4 p.m. West End Service Station, 620 St. Louis Street. Visit cityofedwardsville.com/749/west-end-service-station.

June 6 & 7 INTERNATIONAL HORSERADISH FESTIVAL, Collinsville. Summer festival featuring live music, food, a bloody mary contest, cornhole tournament, root toss, Little Miss Horseradish pageant, 5K run, car show, crafts and kids activities. 11 a.m. - 10 p.m. Admission is free. Uptown at

221 West Main Collinsville. Call (618) 344-2884 or visit internationalhorseradishfestival.com.

June 7 ROCK FOR KIDS, Effingham. Ten young artists and bands are lined up for this year's show. A joint effort between Poss Music Works and Crisis Nursery in support of children and families through music. 2 - 9:30 p.m. Admission is \$10; children 6 years of age and younger are free with adult. The Stage at Lake Sara, East Marine Road. Visit crisisnurseryofeffingham.com.

June 7 ROUTE 66 FESTIVAL, Edwardsville. Event will include live music, great food, classic car show and cruise, food vendors, history tent and local artists. 8 a.m. - 11:30 p.m. Admission is free. City Park, 101 South Buchanan Street. Call (618) 692-7538 or visit edwardsvilleroute66.com.

June 7 TWO RIVERS FAMILY FISHING FAIR, Grafton. Event offers fishing, water-safety seminars, educational activities and prizes. 10 a.m. - 4 p.m. Admission is free. Pere Marquette State Park, 13112 Visitor Center Lane. Call (618) 786-3323, ext. 1.

June 7, 27 COMMUNITY BAND PERFORMANCE, Troy. Enjoy the sounds of the Troy Community Band. The June 7 performance will be a celebration of our 40th anniversary. 7 p.m. St Paul's Lutheran Church School, 112 North Border Street. Performances are subject to change for weather. Find us on Facebook at Troy Community Band.

June 8 ALL-WHEELS DRIVE-IN CAR SHOW, Alton. Come out for the cars and stay for the live music, 50-50 drawing, vendor displays, merchant sidewalk sale and great food. Event features more than 200 classic cars, hot rods and motorcycles.

8 a.m. - 4 p.m.; Live music 1 - 3 p.m. Downtown on State and Belle Streets. Visit downtown-alton.com.

June 8; July 13; August 10; September 14; October 12 PICKERS MARKET, Litchfield. An open-air market with vintage collectibles, live music and food. 8 a.m. - 2 p.m. 400 North State Street. Visit vis-ittlitchfield.com.

June 11, 18; July 16, 30 BELLEVUE PARK CONCERT SERIES, Belleville. Bring your lawn chairs and snacks and enjoy great music. Different band every evening. 7 - 9:30 p.m. Admission is free. Bellevue Park, 401 Bellevue Park Drive. Call (618) 233-1416.

June 13 BIKE RAMBLE, Wood River. Bring your kids for a safe and exciting family night bike ride. Lineup at 7 p.m.; ride at 7:30 p.m. \$3 per person; \$6 per immediate family; child bike raffle \$1. First 175 riders receive t-shirt and bike reflector. Complete the bike ride and join us for refreshments and entertainment. The route begins and ends at the Round House, 633 North Wood River Avenue. Register at the Round House. For more information, call (618) 251-3130 or visit wrparks.org/events/bike-ramble/.

June 13 & 14 LEBANON GARDEN CLUB'S SECRET GARDEN TOUR, Lebanon. Enjoy a self-guided garden tour in historic Lebanon to find inspiration at selected outstanding gardens in the community. Friday 4:30 - 8 p.m.; Saturday 9 a.m. - 1 p.m. Admission is \$10; children 12 years of age and younger are free. Tickets may be purchased at the Visitors' Center, 221 West St. Louis Street. Call (618) 960-1550 or visit gardencluboflebanon.org.

June 13 - August 8 MUNY BAND SUMMER CONCERTS,

June 6-29 PICK YOUR OWN LAVENDER Edwardsville. Pick your own lavender Friday - Sunday from 9 a.m. - 3 p.m. at the Stahlhut family farm, shop an old barn full of handmade lavender products, wander the wildflowerers, purchase plants and enjoy the walking paths. Guided tours. Tenderloin Farms, 6368 St. James Drive. Call (618) 917-0188, follow us @Tenderloinfarms or visit tflavender.com.



Highland. Join us Friday evenings at 8 p.m. for free summer concerts. July 4 concert at 8 p.m. On the square, 948 Main street. Visit highlandmunyband.wixsite.com/muny-home.

June 14 MOVIE IN THE PARK, Maryville. Bring a lawn chair and come out to see Meg 2 (rated PG-13). 7 p.m. Admission is free. Drost Park, East Division Street. Visit vil.maryville.il.us, email parksandrec@maryville-il.us or message us (618) 223-8965.

June 14 OPEN HOUSE/KID'S ART SHOW/TOURS, Vandalia. See our children's art show and great displays telling about the importance of the first federally funded road. 9 a.m. - 4 p.m. Admission is free. National Road Interpretive Center Parking Lot, 106 South 5th Street. Call (618) 283-9380.

June 14 TRAIN SHOW, Greenville. Event features operating toy and model railroad

Continued on page 26 ►

Call to Confirm

Listings are provided by event organizers or taken from community websites. We recommend calling to confirm dates, times and details before you make plans. All are subject to change.

Submissions

To submit an event for consideration in our calendar, email your event information to joe.richardson@sweci.com. Please use our Current Events format (as seen on these pages) to write your submission. Include a contact number or email and submit your listing at least two months prior to your event.

FARMERS MARKETS

June 3 - September 30

FARMER'S MARKET, Highland. Support local farmers, kitchens and artisans at a fun, family-friendly event. Every Tuesday 4 - 7 p.m. Highland Square, 914 Main Street. Email lpinsker@highlandil.gov.

June 5, 19; July 3, 17; August 7, 21 FARMERS MARKET, Lebanon. The first and third Thursday 5 - 7:30 p.m. May through August. Located at 753 True Value Drive, next to Ace Hardware and 50 n' 4 event space. Call (708) 217-7069 or visit facebook.com/lebanonilfarmersmarket.

June 5 - September 11

FARMERS MARKET, Maryville. Market offers fresh produce, honey, locally made crafts, art, and a wide variety of products ranging from home décor to skin-care. Every Thursday 5 - 7 p.m. Fireman's Park, 300 North Donk Avenue. Call (618) 304-8335 or visit facebook.com/MaryvilleILFarmersMarket.

June 5 - October 2 FARMERS MARKET, Swansea. Locally grown fruits, vegetables, meats, baked goods and intriguing handcrafted goods. Every Thursday 10 a.m. - 2 p.m. rain or shine. Rural King parking lot, 2801 North Illinois Street. Visit facebook.com/SwanseaFarmersMarketInc.

June 6 - November 1 MARKET DAYS, Carlinville. Locally-made goods, crafts, antiques, vintage and new clothing, jew-

elry, tools, home décor, baked goods, produce and more at this small business market. This is part farmer's market, part flea market and part craft market. The first Friday of the month. 9 a.m. - 3 p.m. For more information, visit carlinvillemarketdays.com.

June 7 - October 4 FARMERS MARKET, Staunton. Staunton farmers sell their produce every Saturday morning from 8 a.m. - noon. Located on the corner of Mill Street and Union Street. Visit stauntonchamber.com.

June 7 - October 4 THE MELTING POT MARKET, Granite City. Find produce stalls, home décor, art, skin-care products, jewelry, food and snacks, locally-made crafts and live entertainment. Bring cash as not all booths can process cards. First Saturday of the month. 10 a.m. - 2 p.m. Civic Park, 1301 Niedringhaus Avenue. Visit facebook.com/meltingpotmarket.

June 7 - October 18 FARMERS & ARTISANS MARKET, Alton. Local home-grown fruits and vegetables, hormone-free meats, baked goods, plants and flowers, and honey. Artists and makers will offer crafts, homemade soaps and skin care products, jewelry, artwork, pottery and art demonstrations. Every Saturday 8 a.m. - noon. Parking lot near Riverfront Park at corner Landmarks Boulevard and Henry Street. Visit downtownalton.com.

June 7 - October 18 LAND OF GOSHEN COMMUNITY MARKET, Edwardsville. Dozens of vendors sell locally-grown fruits and vegetables, local, farm-raised meats, cheeses, eggs, baked goods and numerous non-food items. Expect live music, demonstrations of different arts and crafts, and gardening tips. The market runs rain or shine and only cancels in extremely inclement weather. Every Saturday 8 a.m. - noon. Downtown Edwardsville, North Second Street. Visit goshen-market.org.

June 8 - September 28 MARKET IN THE PARK Bethalto. The market sells a variety of locally grown fresh produce and meats, honey, art and crafts, and more. Plus live entertainment. Every Sunday 9 a.m. - 1 p.m. Central Park, 213 North Prairie Street. Call (618) 240-2777.

June 14; July 12; August 9; September 13 FARMER'S MARKET, Hillsboro. A great selection of locally grown produce, plants, artisan goods, and handmade crafts. 9 a.m. - noon. Courthouse parking lot, North Main Street. Call (217) 710-2495 or visit facebook.com/hillsborofarmersmarketillinois.

June 14; July 12; August 9; September 13; October 11 FARMERS MARKET, Vandalia. Our goal is to inspire and nurture a healthy community by building a local and sustainable

food economy in an engaging downtown experience while showcasing local farmers and gardeners. 8 - 11 a.m. Downtown on 4th Street by the Old State House. Visit facebook.com/vandaliaillinoisfarmers-market.

June 14 - October 25 FARMERS MARKET, Effingham. Offers locally-grown food, art, live music and quality artisan goods. Every Saturday from 8 a.m. - noon. Effingham County Courthouse Museum lawn, 100 East Jefferson Avenue. Visit facebook.com/effinghamfarmersmarket.

June 19 - September 11 FARMERS MARKET, Brighton. Find home-grown, local produce, honey, crafts and more. Every Thursday 4 - 7 p.m. Schneider Park, 414 North Maple Street. Call (618) 372-8860.

June 27; July 25; August 22; September 26 FARMERS' MARKET, Carlyle. Fresh produce, meat, eggs, bread, freshly cut flowers, plants, fudge, syrup... you never know what you'll find at the market. 5 p.m. - dusk. Carlyle VFW, 1250 Franklin Street. Visit [carlylelake.com](https://facebook.com/carlylelake) or find us on Facebook.



► *Continued from page 24*
displays and unlimited 1-mile train rides. Concession stand on site. Doors open at 10 a.m. Admission is \$7; children 12 years of age and younger are free. Proceeds benefit American Heritage Railroad. American Farm Heritage Museum, 1395 Museum Avenue. Call (618) 664-9733 or visit americanfarmheritemuseum.org.

June 14 TREASURE IN THE TRUNK, Vandalia. Bring items you want to sell and display them from your trunk, truck or table. Cost to seller: \$10 cash payment when setting up. Reserve space through the National Road Interpretive Center and set up in our parking lot. 8 a.m. - 4 p.m. National Road Interpretive Center Parking Lot, 106 South 5th Street. Call (618) 283-9380.

June 18-20 MONTGOMERY COUNTY FAIR & AGRICULTURE ASSOCIATION, Butler. Visit facebook.com/fair.montgomerycoil.

June 19-22 ALTON LITTLE THEATER: DARE TO DREAM JR, Alton. Step into a world of magic and wonder as our young performers bring Dis-

ney's greatest hits to life. June 19 and 20 at 7:30 p.m.; June 21 and 22 at 2 p.m. Admission is \$15. Alton Little Theater, 2450 North Henry Street. For tickets, call (618) 462-3205 or visit altonlittletheater.org.

June 21 GOAT YOGA, Livingston. A beautiful morning of stretching your body and cuddling baby goats. 10 a.m. \$35 per person. Twistee Treat Diner, 908 Veterans Memorial Drive. Visit facebook.com/events/1334818074215662 or email area66marketing@gmail.com.

June 21 JEEP RUN "DUCK HUNT", Livingston. Visiting 5 locations on Route 66 from Livingston to Litchfield then back to the diner for prizes. Check in at 1 p.m.; depart at 2 p.m. \$5 per person. Twistee Treat Diner, 908 Veterans Memorial Drive. Visit facebook.com/events/1334818074215662 or email area66marketing@gmail.com.

June 21 ROUTE 66 CAR CRUISE EXTRAVAGANZA, Livingston. All makes, models and years are welcome. Event includes live music, food and drinks. 4 p.m. Admission is free. Twistee Treat Diner, 908 Veterans Memorial Drive. Visit facebook.com/events/1334818074215662 or email area66marketing@gmail.com.

June 26; July 10, 24 PUBLIC SQUARE CONCERT SERIES, Belleville. 7 - 9:30 p.m. Downtown Public Square, Main Street and Illinois Street. Call (618) 233-1416.

June 26-29 THE LITTLE MERMAID, Breese. A theatrical presentation by Clinton County Showcase. Thursday - Saturday at 8 p.m.; Sunday at 7 p.m. Admission is \$10. Showcase Stage at Breese Northside Park, North 10th Street. For tickets, visit clintoncountyshowcase.com.

June 26 - September 18 LIVE CONCERT SERIES, Highland.

Join the Highland community for nights filled with fun and live music. 6 - 9 p.m. July 10 show starts at 7 p.m. Free to the public every Thursday on the beautiful Highland Square at 914 Main Street. Performers, dates and times subject to change. Call (618) 654-6071 or visit highlandil.gov.

June 28 BBQ COMPETITION, Altamont. Join us for a day of delicious barbecue, fun activities and community spirit. Event features barbecue competition, bags tournament, bounce houses, car show, beer garden, live music and Queen of Hearts and golf cart raffle. All proceeds benefit Altamont Fire Protection District. 1 - 10 p.m. Effingham County Fairgrounds, 722 East Cumberland Road. Call (217) 994-3800 or (618) 322-6987.

June 28 CRAFT BEER WALK, Belleville. An evening of exploring downtown while sampling the best beer selections from over 25 regional breweries. Participants must be 21 years of age or older. This is a rain or shine event. 3 - 7 p.m. Belleville Main Street, 216 East A Street. Visit bellevillemainstreet.net.

June 28 EARS MICROCHIP EVENT, Effingham. On-site microchipping. No appointment needed. No geography or number limit. 10 a.m. - noon. Freewill donation. EARS - Effingham Animal Rescue Sanctuary, 408 East Fayette Avenue. Visit effinghamanimalrescue.com or call/text (217) 500-0231.

June 28; July 12 CLASSIC FLICKS FOR CONSERVATION, Godfrey. Watch a classic movie on our giant inflatable screen. 2025 will be the year of classic horror films at TNI. All movies this year will feature an episode of the 1935 movie serial "The Phantom Empire" as a pre-film short. Bring your own lawn chairs or blankets, as well as your own snacks. No alcohol is permitted. No pre-registration required. Limited parking is available, so arrive early. 9 p.m.

June 28 KAYAKING DAY, Maryville. Come out and kayak with us for free. Boats, gear and safety personnel will be provided. Noon - 5 p.m. Pre-registration is required. Drost Park, East Division Street. For more information, visit vil.maryville.il.us, email parksandrec@maryville-il.us. To register, call (618) 223-8965.



Event is free but donations are welcome. The Nature Institute, 2213 South Levis Lane. Call (618) 466-9930 or visit thenatureinstitute.org.

July 4 & 5 BOND COUNTY FOURTH FEST, Greenville. Event will feature fireworks, food, beverages, live music and youth play area/bounce houses. The Boys in the Band (Alabama Tribute) will perform on July 4 and The Ozark Mountain Daredevils July 5. 5 p.m. - midnight. Downtown Greenville, Main and Second Street. Visit facebook.com/BondCountyFourthFest or call (618) 322-2216.

July 6 FIRECRACKER KAYAK, CANOE & SUP Race, Grafton - Alton. This fundraiser for Mississippi River Water Trail Association will be held on the Mississippi River. Paddlers will race on a 15-mile downriver course from Grafton access to the Alton riverfront, ending at the Alton marina. After the race, participants are invited to come to Old Bakery Beer Company for a free meal, courtesy of MRWTA. 7 a.m. - 3:45 p.m. For more information or to register, visit mississippiriverwatertrail.org/firecracker-race/.



June 14 SCOTT AFB OPEN HOUSE & STEM EXPO, Shiloh. Event will feature static aircraft and a variety of military equipment, assets, and exhibits. STEM Expo is great for anyone interested in aviation or the military. 9 a.m. - 4 p.m. Admission is free and open to all. Scott Air Force Base, 101 Heritage Drive. Visit scott.af.mil.



June 13-16 FREE FISHING DAYS. This is the one time of year when it's legal to fish any public Illinois waters without a fishing license, inland trout stamp or salmon stamp. For a list of rivers, lakes, tactics, tips, and fishing related news, go to: <https://www.ifishillinois.org/index.html>.

SOLUTION

Puzzle appears on page 18.

FIRST-TIME FISHER

1. 4 Crawfish
2. 6 Frogs
3. 1 Small curly tail grub
4. 1 Big curly tail grub
5. 1 Egg sinker
6. 3 Bell sinkers
7. 2 Bullet sinkers
8. 8 Bobbers
9. 1 Zebco 202
10. 1 Salamander
11. 4 Bass Birds

SEASONED ANGLER

12. 9 Marabou jigs
13. 2 Pop Rs
14. 1 Hula Popper
15. 1 Jitterbug
16. 1 Rapala original floater
17. 2 Rooster tails
18. 1 Yellow spinner bait
19. 2 Gold willow leaf spinner blades
20. 1 Lure for walking the dog while you fish

