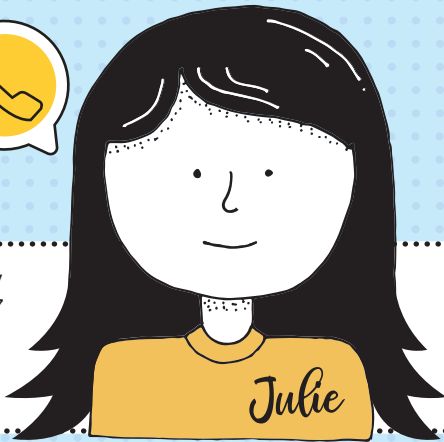
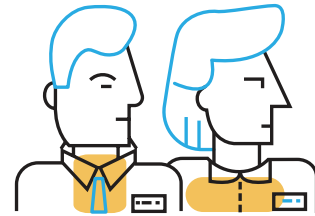


Steps to Solar Commissioning



Contact Julie Lowe, energy manager, at (800) 637-8667 or julie.lowe@sweci.com for our information and commissioning packet.



Contact your installer and insurance agent. Ask your installer for a one-line diagram. Request a certificate of insurance from your agent. They're welcome to send those documents to Julie Lowe at Southwestern Electric. Or if you'd like to review them, they can send them to you, and you can pass them along to Julie.



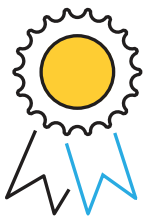
As your installation nears completion, call us. We'll discuss the commissioning timeline. You'll receive a \$500 invoice to cover the installation of your new dual register electric meter, a system inspection, and your array's interconnection to the grid.



After installation is complete, contact us to schedule your system's on-site review and commissioning.



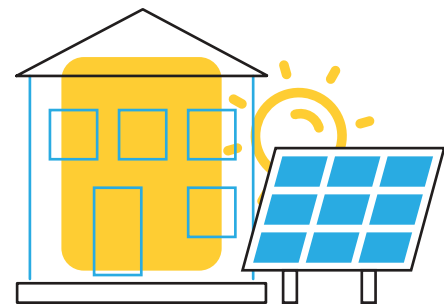
Our commissioning team will visit your site. An engineer will inspect your system to verify it meets our safety specifications. A team member will review a memorandum of understanding with you. You'll sign this document for our files. Note: If you won't be present for commissioning, please schedule a meeting to review and sign the memorandum beforehand. After your system passes inspection, you go live! Your array is connected to Southwestern's distribution system.



We'll send you a certificate of completion, which you'll submit to your installer to receive your solar renewable energy credits, or certificates (SRECs).



Each year, you'll submit documentation to confirm you've renewed your insurance.



Every three years, we'll visit your system to confirm it's connected properly, well-maintained, and that your safety signs are in place.